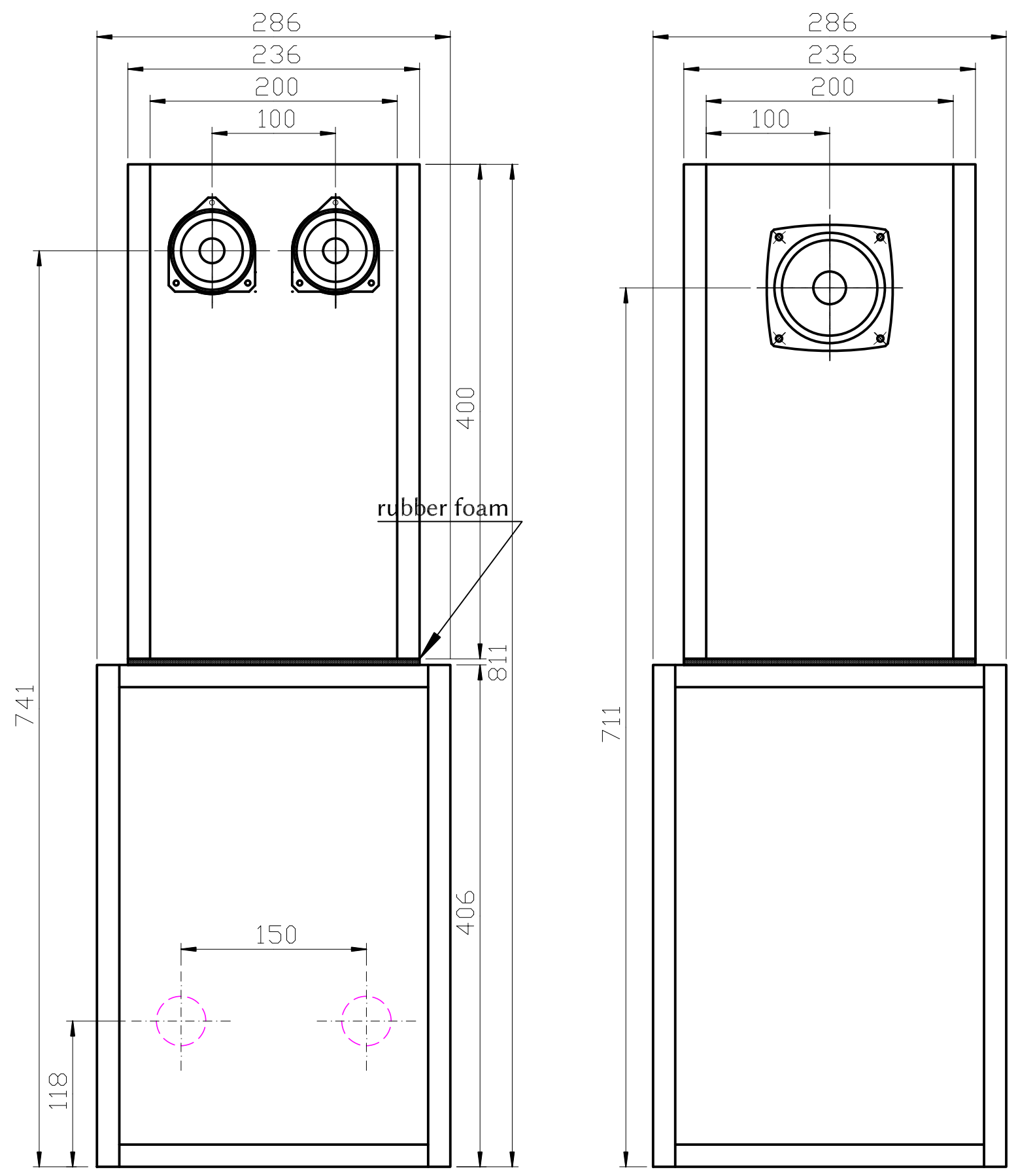


6 5 4 3 2 1



FRONT VIEW SIDE VIEW

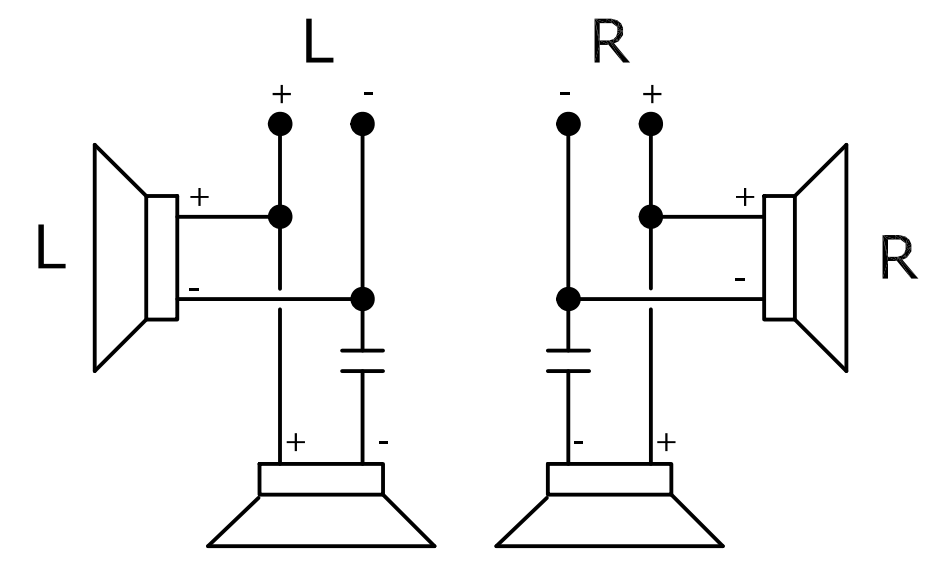
SYSTEM ASSEMBLY

SCALE 1:4



GENERAL NOTES

1. Example of main driver is model P1000K of Fostex.
2. Example of tweeter driver is model F03007H0 (no brand).
3. 4" or 5" full-range drivers are suggested for main ones.
4. Tweeter is not required. Choose available driver if you install.



WIRING DIAGRAM

SCALE : N.T.S.

WIRING NOTES

1. Determine capacitor's capacity, with hearing or measuring.
2. Wiring gauge AWG18 or AWG16 is recommended.

ASSEMBLY NOTES

1. Place main chamber on subchamber.
2. Laminate rubber foam to bottom of main chamber along perimeter in order to prevent from gap between chambers.
3. Main and subchambers may be secured with adhesive.

TITLE			
MMX-2 SYSTEM ASSEMBLY			
SIZE	CAGE CODE	DWG NO	REV
A3		24-MMX-MCP-01-01-M (1/3)	
SCALE		SHEET	

6 5 4 3 2 1

6

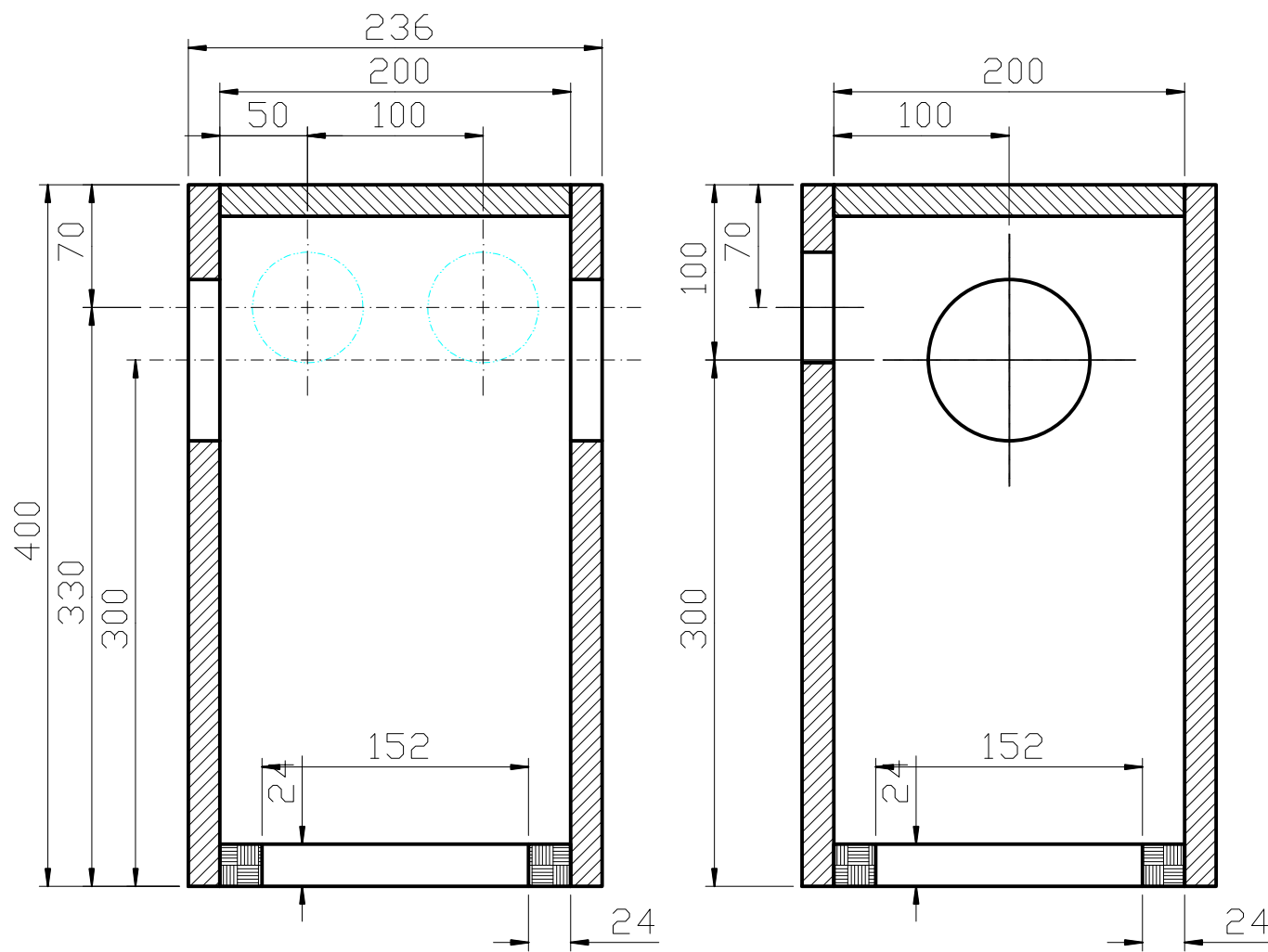
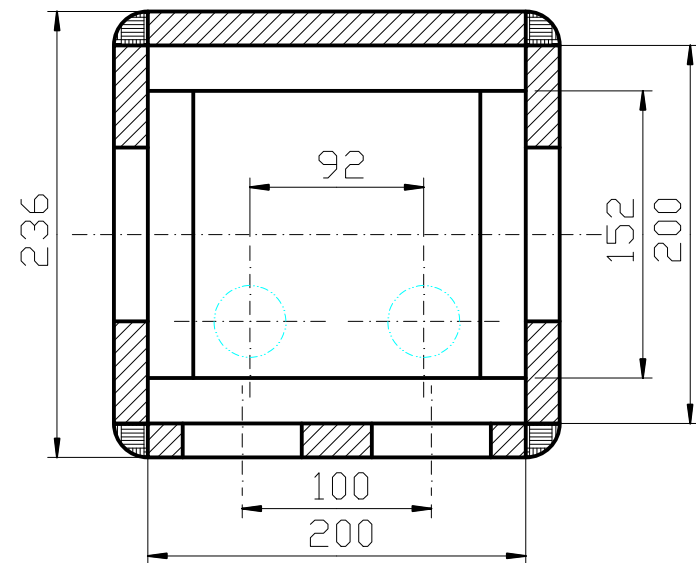
5

4

3

2

1



MAINCHAMBER
SCALE : 1/4

DUCT INSTALLATION NOTES

1. Make hole diameter (d) through enclosure shell little greater than duct diameter (D).
2. Set duct to hole with friction.
3. Make sure duct will not drop into enclosure.
4. Make duct length (L) as indicated or designed.



TITLE			
MMX-2 MAIN CHAMBER			
SIZE	CAGE CODE	DWG NO	REV
A3		24-MMX-MCP-01-01-M (2/3)	
SCALE		SHEET	

6

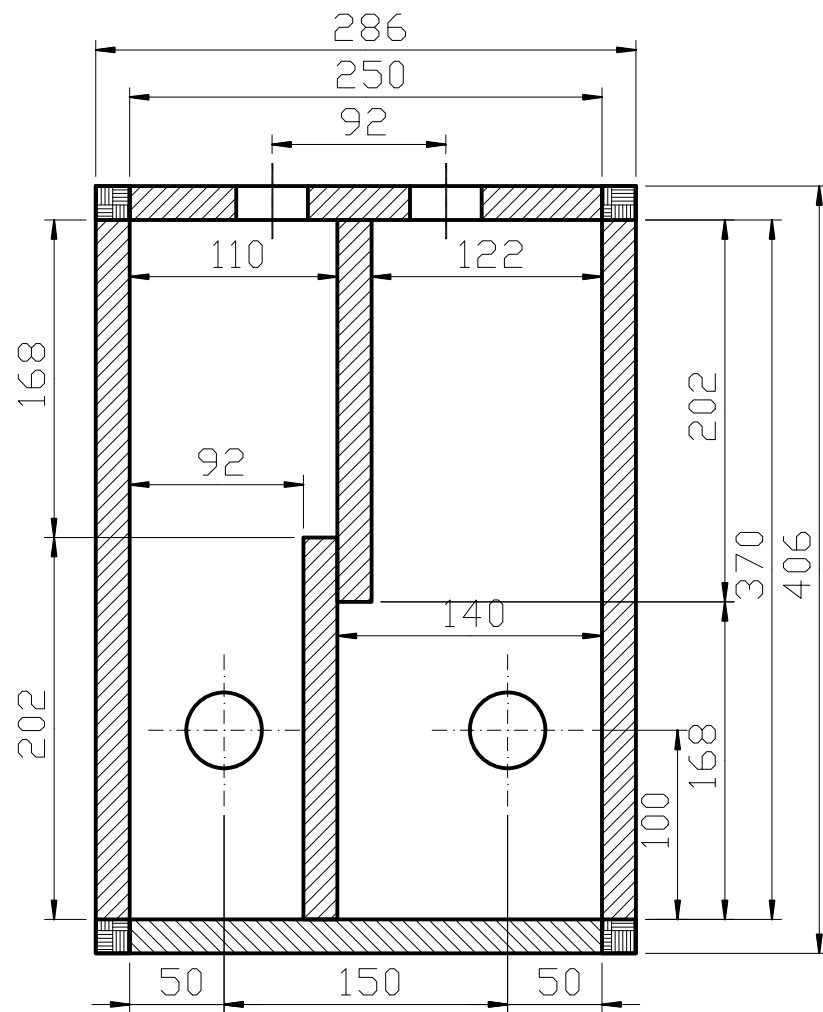
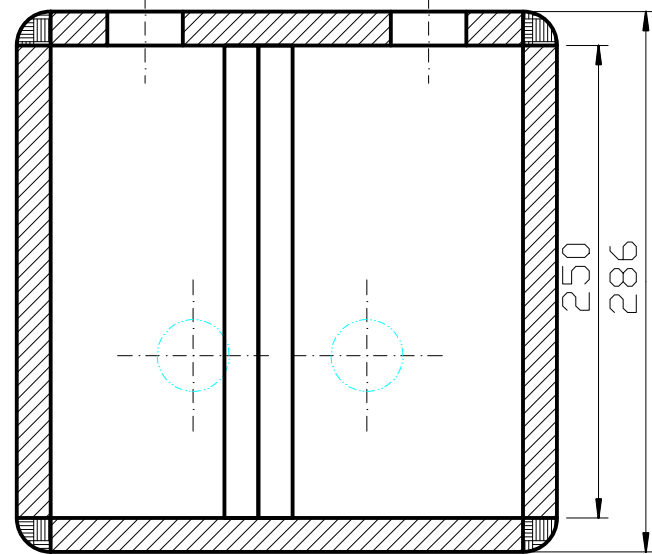
5

4

3

2

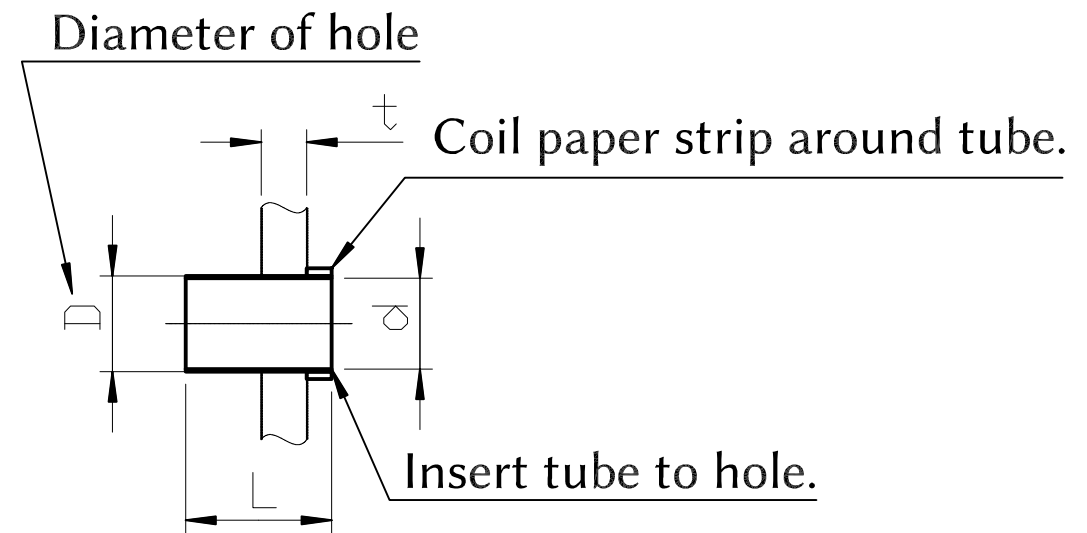
1



SUBCHAMBER

SCALE : 1/4

GRAPHIC SCALE 0 20 50 100 mm



INSTALLING BASS-REFLEX DUCTS

SCALE : 1/3

GRAPHIC SCALE 0 20 50 100 mm

DUCT INSTALLATION NOTES

1. Make hole diameter (d) through enclosure shell little greater than duct diameter (D).
2. Set duct to hole with friction.
3. Make sure duct will not drop into enclosure.
4. Make duct length (L) as indicated or designed.

TITLE			
MMX-2 SUBCHAMBER			
SIZE	CAGE CODE	DWG NO	REV
A3		24-MMX-MCP-01-01-M (3/3)	
SCALE		SHEET	